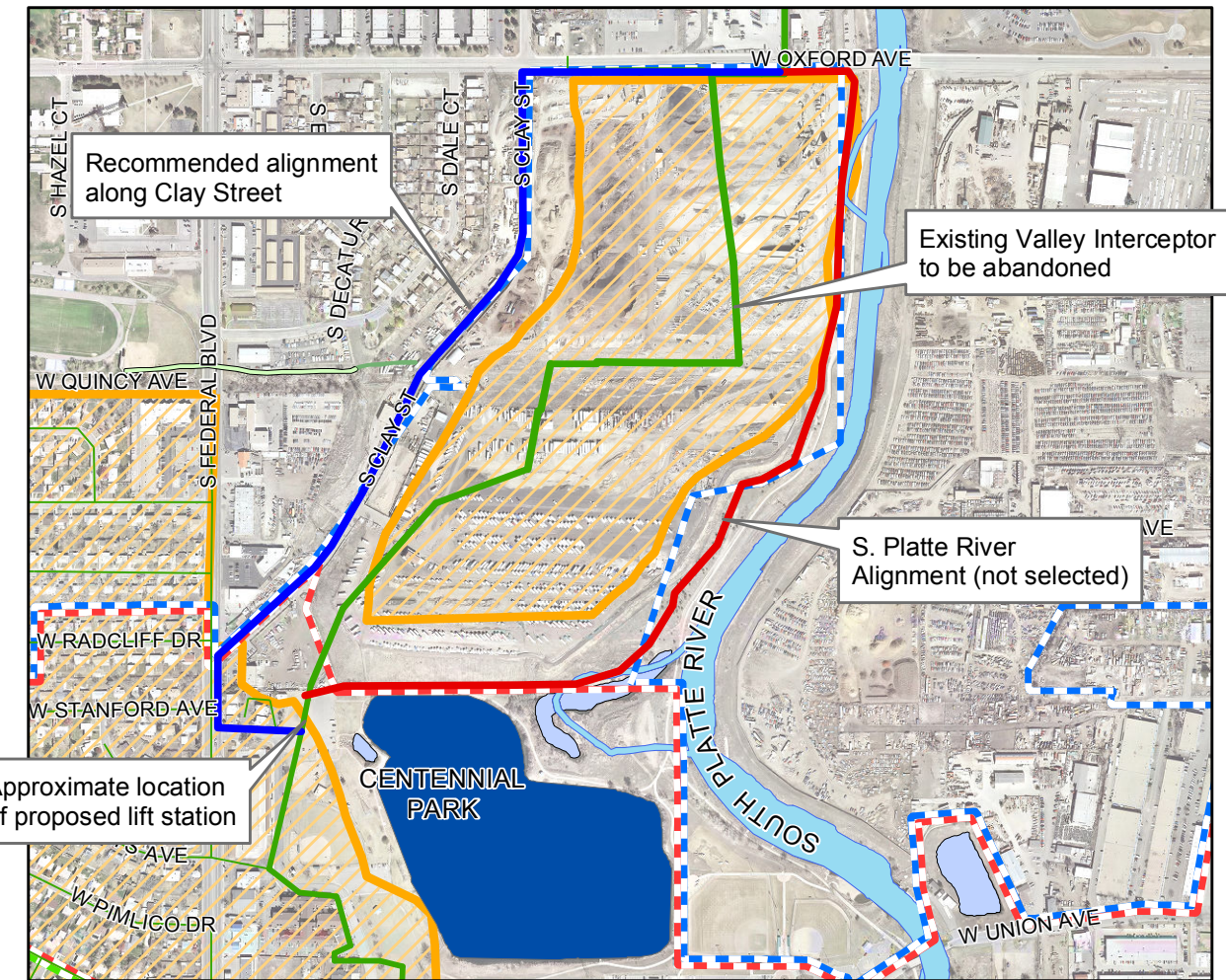


Location Map

© OpenStreetMap (and) contributors, CC-BY-SA
0 2.5 5 10 Miles



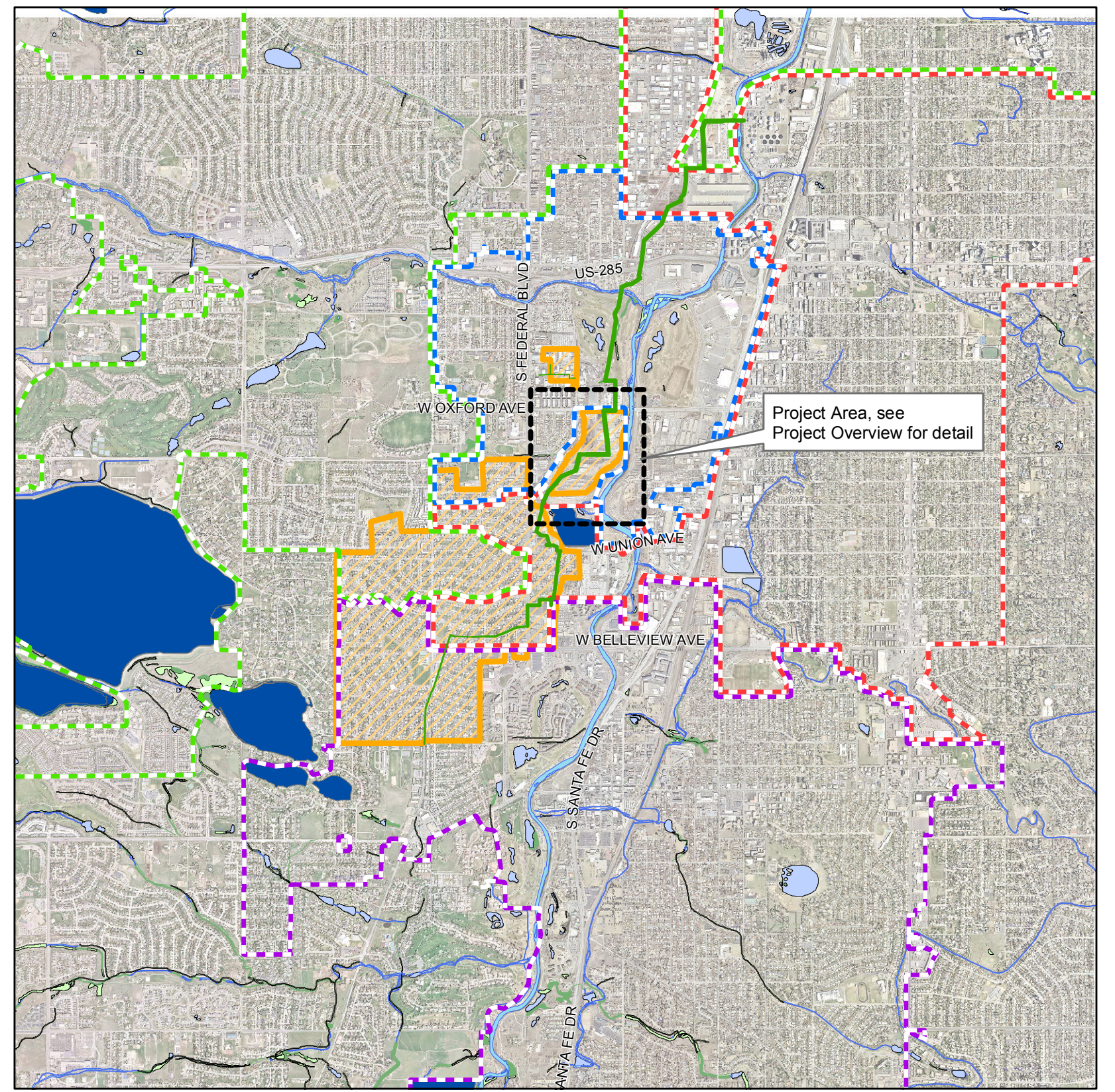
Project Overview

Approximate location of proposed lift station

Recommended alignment along Clay Street

Existing Valley Interceptor to be abandoned

S. Platte River Alignment (not selected)



Project Area Map (3-Mile Radius)

Project Area, see Project Overview for detail

Valley Sanitation District

- Municipalities**
- Denver
 - Sheridan
 - Englewood
 - Valley Sanitation District

- Environmental Features**
- Freshwater Emergent Wetland
 - Freshwater Forested/Shrub Wetland
 - Freshwater Pond
 - Lake
 - Rivertine



Project Area Map

Date: 4/17/2017

Drawn By: CTW