



Valley Sanitation District

Summary

- Who we are (History)
- What we do (Operations/Maintenance)
- Asset Management/Capital Projects
- District Finances



WHO WE ARE.....



District History

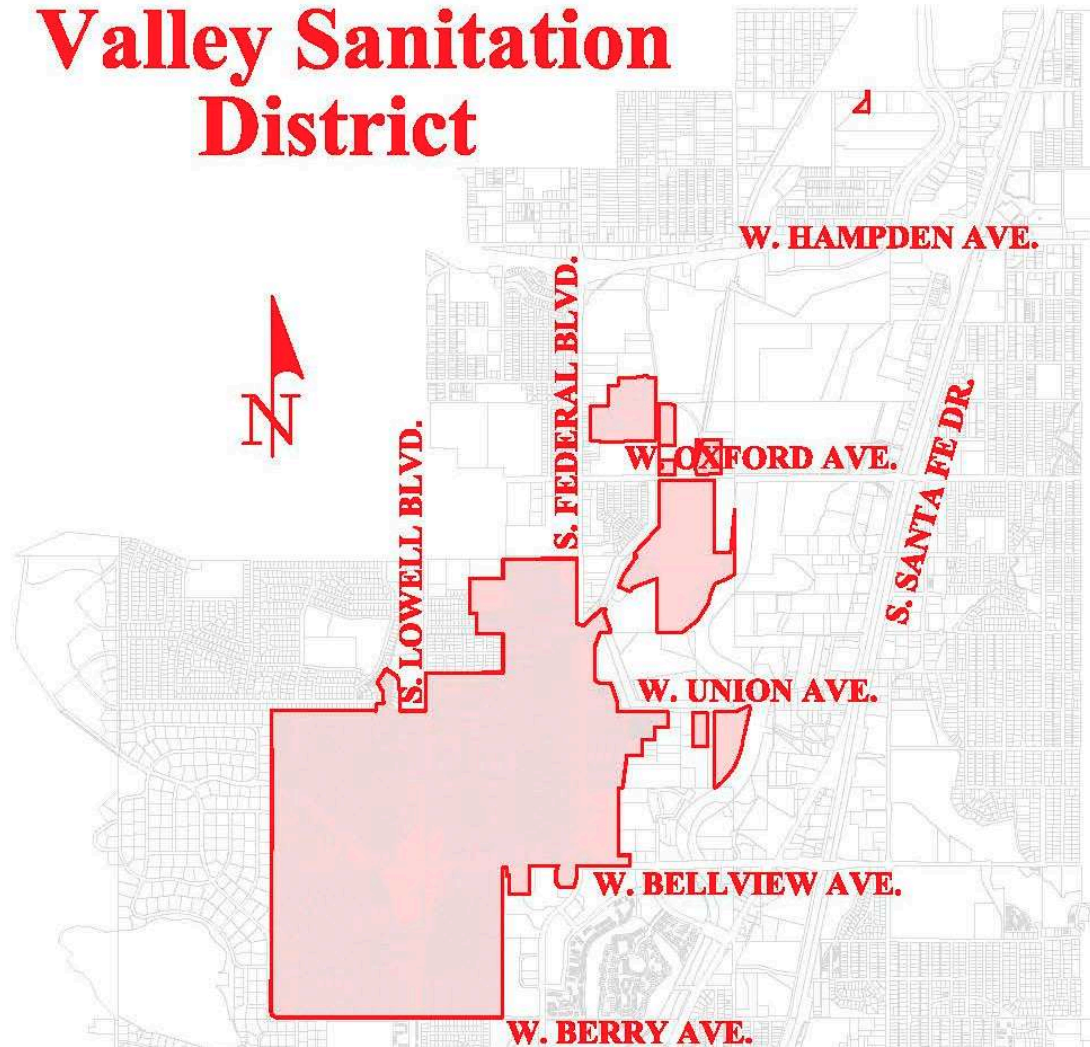
- Valley Sanitation District was organized in 1955 as a Title 32 Quasi-Municipal government (Special District) for the purpose of providing sanitary sewer collection services and contracting for wastewater treatment.
- Board of Directors – 5 member elected board
 - Phyllis Gooden– President
 - Mary Alice Ledbetter
 - Frederick Boggs
 - Wilbur R. Hall
 - Connie Kucharski
- District Manager – Patricia Harris
- Valley contracts with Platte Canyon Water and Sanitation District for administrative and facility maintenance services (June 22, 2007).
- Platte Canyon staff – 14 employees (7 operations & 7 administrative) with combined 183.2 years experience.

History Continued...

- Valley Sanitation District contracts with the City of Englewood for wastewater treatment services.
- The City of Englewood bills Valley customers directly for treatment services provided.
- The District owns and maintains all sewer facilities.

District Boundary Map

Valley Sanitation District





OPERATIONS/MAINTENANCE...

Sewer Maintenance

The District owns and maintains 27 miles of sewer mains and 565 sewer manholes.



Sewer maintenance activities include:

- Root cutting
- Root treatment
- Hydraulic cleaning

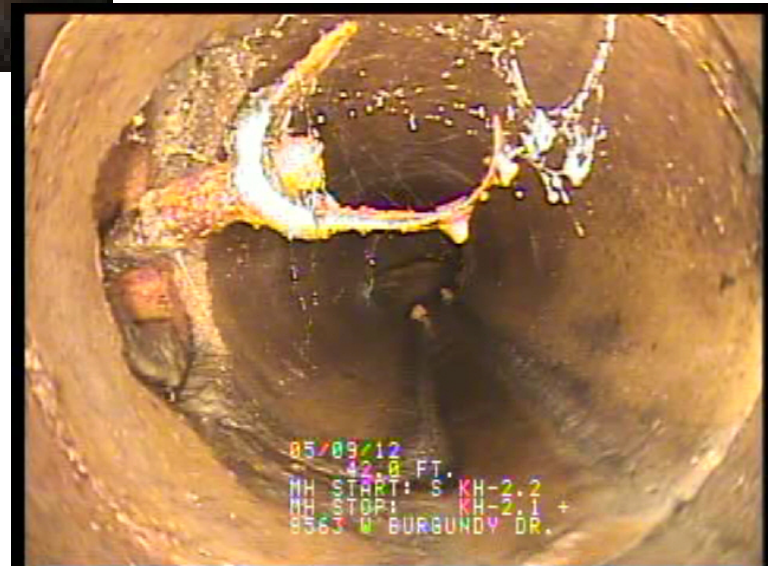
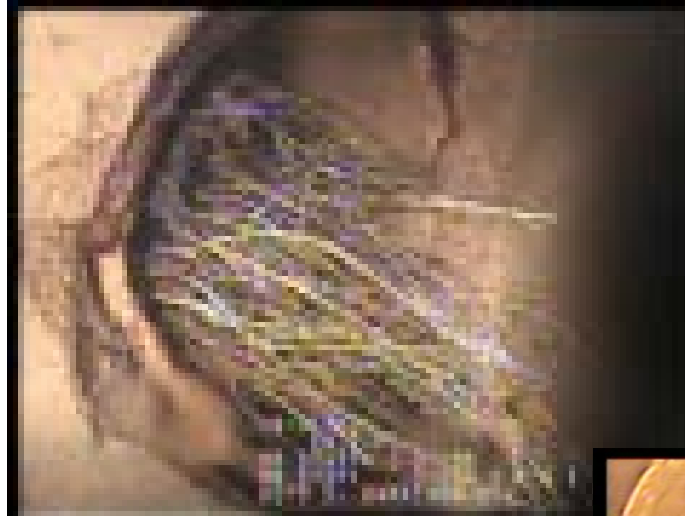
Sewer Maintenance

- Closed-circuit television inspection
- Inspecting all service connections on main line
- Inspecting all sanitary sewer lines for condition every four years



Sewer Maintenance

- Closed-circuit television inspection
- Inspecting all service connections on main line
- Inspecting all sanitary sewer lines for condition every four years



Sewer Maintenance

When defects are discovered on private sewer services, a letter is sent to the homeowner stating that their sewer service line needs to be cleared or repaired.

Important Sewer Notice

December 26, 2013

Owner/Occupant
3805 Chimayo Rd.
Littleton, CO 80123

Dear Customer:

Valley Sanitation District staff completed an internal television inspection of the public sanitary sewer mainline serving your property on December 16, 2013. This inspection has revealed root intrusion originating from your private sewer service pipe.

In order to prevent a stoppage in your service pipe, or in the District's sewer main, we recommend that you consider having your service pipe cleaned by a qualified sewer service company or plumber. If you do elect to clean your service pipe, please contact the office after the work is performed.

If you should have any questions regarding this matter, please contact Scott Hand, Operations Supervisor, at (303)979-2333 Monday through Friday between the hours of 8:00 a.m. and 3:30 p.m.

Sincerely yours,

Scott Hand

Scott Hand
Operations Supervisor

SMH/blb



S:\data\WPD\OCS\LETTER\Sewer Letters\3805ChimayoRd.FORM.wpd

Ownership/Maintenance Responsibility of Sewer Service Lines

- The customer owns and maintains the entire sewer pipe up to, and including, the connection to the District's main, regardless of whether the pipe is located in the street or on the customer's property.
- The District does *NOT* provide any repair services on the sewer service pipe, whether located in the street or on the customer's property.



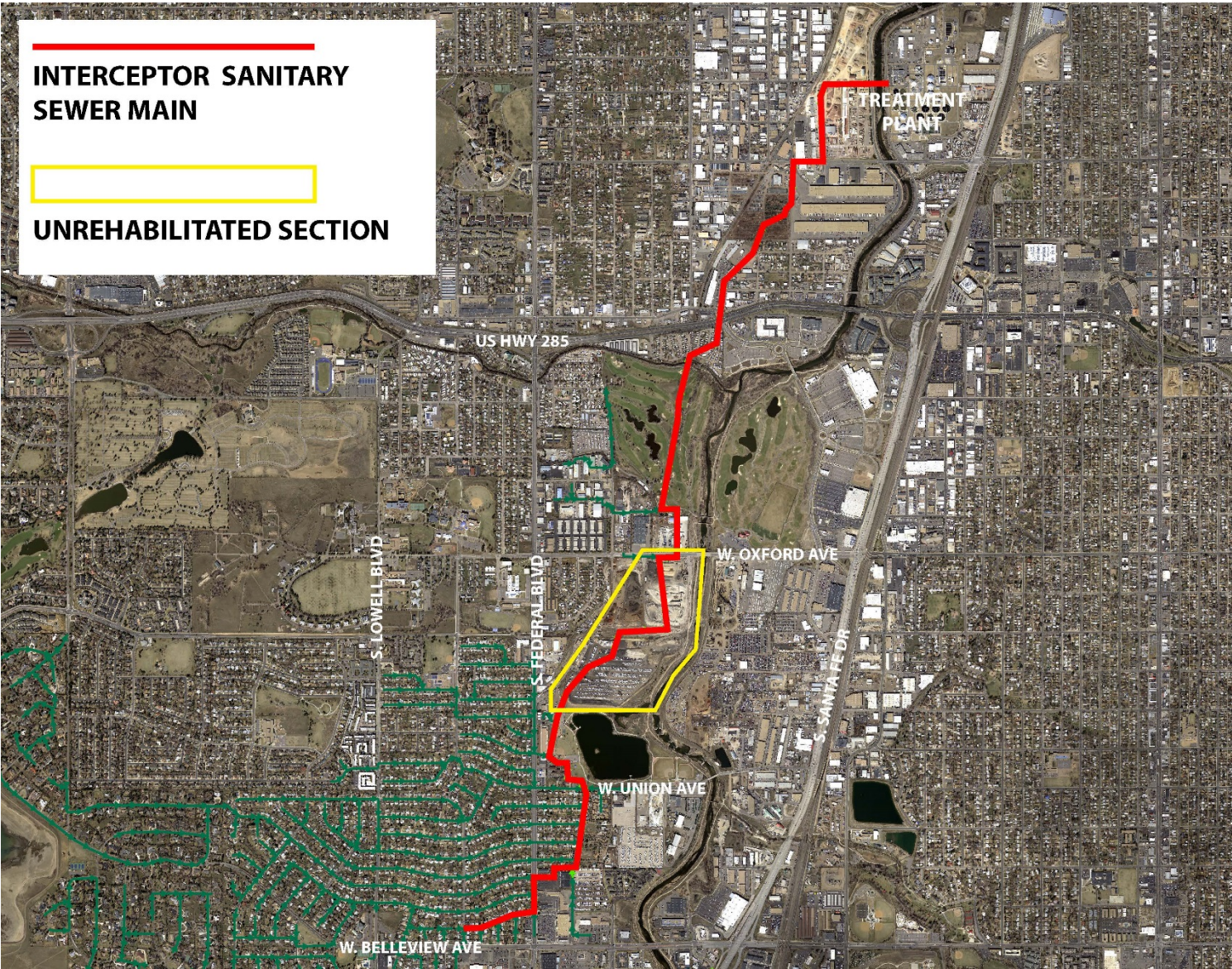


**ASSET MANAGEMENT
CAPITAL PROJECTS....**

Asset Management

- District has been proactive in maintaining, rehabilitating and replacing assets.
- Valley owns 142,731 feet (27.03 miles) of 8"-24" sewer pipe of which.
 - 121,453 feet of 8 and 10 inch collection (subdivision) pipe and 21,278 feet of 12-24 inch interceptor pipe which collects all wastewater from subdivision pipes for transport to treatment plant.
 - 42,389 feet of concrete pipe, 34,061 feet of clay pipe, 4,152 feet of PVC, 2,375 of C-900, 731 feet of DIP.
 - 59,024 feet has been replaced or rehabilitated since 1981 (41% of entire sewer system) of which 19,521 feet is interceptor pipe.
- Prior to December 31, 2014, replacement and rehabilitation projects were funded solely by District property taxes.
- As of January 1, 2015, all replacement and rehabilitation projects are funded by a combination of District property taxes and service charges.

Valley Interceptor



Un-rehabilitated Section of Valley Interceptor



Valley Interceptor Rehabilitation

- The Interceptor in this area is located within an abandoned landfill. The concrete pipe is 62 years old and is experiencing severe deterioration.
- As a result of landfill material deposited over the interceptor, it is now 50+ feet deep which causes dangerous and difficult conditions for maintaining the pipeline.
- Pipe is located within narrow easement precluding access without trespassing on private property. Standard excavators are unable to reach the pipeline for repairs.
- It is believed that methane gas is being generated in the landfill and infiltrating the interceptor. The Littleton/Englewood Treatment Plant has detected high levels of hydrocarbons entering the treatment plant.
- Due to deterioration of the concrete pipe, extraordinary depth (50+ feet), restricted access, and infiltration of hydrocarbons, the Board authorized a study to remediate the dangerous conditions of the pipe.

Evaluation of Alternatives

- Study concluded that rehabilitation is not a viable option.
- Recommendation was to relocate pipe outside of landfill.
- Three alignment alternatives were evaluated.

Valley Interceptor Realignment

Alternative 1: Platte River Gravity Interceptor

Location



Advantages

- Manageable depth
- Easier access for some portion

Disadvantages

- New pipe remains in landfill
- Import backfill material
- Interference with trail

Valley Interceptor Realignment

Alternative 2: S. Clay St. Gravity Interceptor

Location



Advantages

- Avoids lift station / pumping cost
- Easier access

Disadvantages

- 50 foot depth of sewer to maintain positive slope (possibly infeasible to construct)
- Maintenance difficulties

Valley Interceptor Realignment

Alternative 3: S. Clay St. Wastewater Pumping and Force Main

Location



Advantages

- Manageable depth
- Easier access
- Not exposed to hydrocarbons
- Manageable impacts to traffic/public and constructability

Disadvantages

- Pumping/maintenance costs

Valley Interceptor Realignment

- Alternate 3 was selected as the preferred option for relocating the interceptor as it meets the objective by re-routing the pipe outside of the landfill and keeps the new pipe at reasonable depth for operation/maintenance.
- The estimated cost for alternative 3 is \$2,350,000
- The District is pursuing a loan for the project from the Colorado's State Revolving Fund Loan Program
 - The program lends money at below market interest rates to finance design and construction of public drinking water and wastewater infrastructure projects.
 - Direct loan for project up to \$2.5 million
 - Interest rate either 0%, 1% or 2% for up to a 30 year term
 - Rate is based on median household income.
 - Repayment of the loan will necessitate an election to increase property taxes.



DISTRICT FINANCES



Financial – 2017 Budget

Revenue		
Taxes	\$161,074	
Tap Fees	\$9,000	
System Rehabilitation Enterprise	\$65,503	
Interest	\$3,626	
Other	\$2,500	
Total		\$241,703
Expenses		
Operations/Maintenance	\$96,700	
Administration	\$79,894	
Capital	\$0	
Other	\$51,758	
Total		\$228,352
Excess Revenue Over (Under)		\$13,351

Financial – Fund Balance Projections

Current fund balance	\$450,158
Collection system rehabilitation	\$1.4 million
Outfall sewer relocation	\$2.5 million
Deficit	\$3.4 million



Valley Sanitation District

8739 W. Coal Mine Ave., Littleton, CO 80123



- Visit the District's website

www.colorado.gov/valleysanitation

- District history
- Financial information (budgets, audits, quarterly financial statements)
- Maintenance reports
- Board meeting agendas/minutes
- Capital project information